

## Lifting Point Weldable Powertex LPW

### Product information



The Powertex Lifting Point Weldable - LPW is an indispensable tool primarily utilized for establishing secure lifting points on heavy machinery and equipment such as excavators, earth-moving machines, lifting beams, and various tools. Designed to be permanently attached through welding, the LPW offers a fixed lifting point that allows for a 180-degree pivot, enhancing its versatility in operation. It features a forged housing with an integrated forged D-ring and a spring mechanism that keeps the D-ring snugly against the surface, significantly reducing noise and movement, particularly in high-vibration environments.

#### Allowed Loading directions:

- +/- 90° in the pivot plane over the housing
- 100% WLL in all allowed loading directions
- WLL According to WLL Diagram

#### Product Features:

**Durable finish:** Coated in PURE RED powder paint, the Powertex LPW lifting points are visually distinct and offer superior resistance to wear and corrosion.

**Welding preparedness:** The housing is specifically blasted to create an optimal surface for welding, ensuring a robust and reliable bond when welded by a certified professional.

**Compliance to standard:** Manufactured to meet the testing requirements specified by EN 1677-1 and AS 3776, ensuring high safety and quality standards.

**Reliable:** Designed with a safety factor of at least 4 in the intended load directions, offering a secure lifting experience.

**Quality assurance:** Each component undergoes crack detection testing in the factory and forged links are proof load tested to ensure reliability.

**Type testing:** Each model undergoes type testing, including breaki... [Read more](#)

**Features:** Weldable, same WLL in all intended load directions (no side-loading)

**Material:** Forged Alloy Steel

**Marking:** According to standard, CE-marked, UKCA-marked, Powertex, model name, WLL and batch number

**Temperature range:** -40 up to +100°C without reduction in WLL

**Finish:** Powder painted in PURE RED

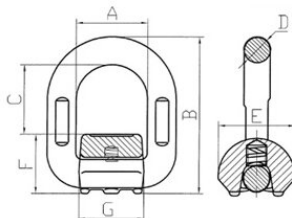
**Standard:** EN 1677-1, AS 3776

**Note:** The LPW is WLL (Working Load Limit) rated, assuming that the correct welding procedure is meticulously followed and executed by a suitably qualified welder, to maintain the product's integrity and compliance with safety regulations.

**Warning:** Side loading of the D-ring is not permitted

## Lifting Point Weldable Powertex LPW

### Blueprint



### Technical data

Part Code	WLL ton	Model	A mm	B mm	C mm	D mm	E mm	F mm	G mm	Weight (kg)
4215LPW1T	1	LPW-1T	41	80	35	13	38	33	37	0.47
4215LPW2T	2	LPW-2T	42	90	41	14	40	36	38	0.5
4215LPW3T	3	LPW-3T	46	96	42	17	43	37	44	0.7
4215LPW5T	5	LPW-5T	55	121	48	22	61	50	50	1.5
4215LPW8T	8	LPW-8T	70	144	62	26	70	54	66	2.5
4215LPW10T	10	LPW-10T	85	168	78	28	76	62	78	3.6
4215LPW15T	15	LPW-15T	97	187	86	36	90	72	90	5.8