

Bow Shackle with Screw Pin

Product information



Bow type shackle with screw collar pin for quick and easy opening.

- Manufactured and tested in accordance with AS2741.
- All bodies are marked with the batch number for traceability.
- All parts are hot dip galvanized for long life.
- Test and mill certificates available on request.

... [Read more](#)

Material: Forged alloy steel

Marking: According to standard, CE-marked

Temperature range: -10°C up to +200°C

Finish: Hot dip Galvanised with blue painted pins

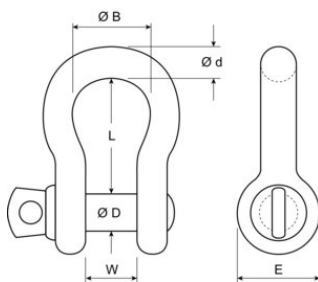
Standard: AS 2741

Safety factor: 6:1

Grade: 6

Bow Shackle with Screw Pin

Blueprint



Technical data

Part Code	WLL ton	d mm	D mm	W mm	L mm	B mm	E mm	Weight (kg)
420100011162	0.05	6	8	12	29	20	17	0.05
420100031160	0.33	5	6	10	22	15	14	0.03
420100081160	0.75	8	10	13	31	21	21	0.09
420100101160	1	10	11	17	37	26	25	0.14
420100151160	1.5	11	13	18	43	29	27	0.2
420100201160	2	13	16	21	48	33	33	0.31
420100331160	3.25	16	19	27	61	43	40	0.6
420100481160	4.75	19	22	32	72	51	48	1
420100651160	6.5	22	25	37	84	58	54	1.6
420100851160	8.5	25	29	43	95	68	60	2.3
420100951160	9.5	29	32	46	108	74	67	3.2
420101201160	12	32	35	52	119	83	76	4.4
420101351160	13.5	35	38	57	133	92	84	5.8
420101701160	17	38	41	60	146	98	92	7.7
420102501160	25	44	51	73	178	127	110	13
420103501160	35	51	57	83	197	146	127	19
420105501160	55	65	69	104	263	-	-	37