

Bow Shackle with Safety Pin

Product information



Bow type shackle with safety pin.

- Manufactured and tested in accordance with AS2741.
- All bodies are marked with the batch number for traceability.
- All parts are hot dip galvanized for long life.
- Test and mill certificates available on request.

... [Read more](#)

Material: Forged alloy steel

Marking: CE-marked

Temperature range: -10°C up to +200°C

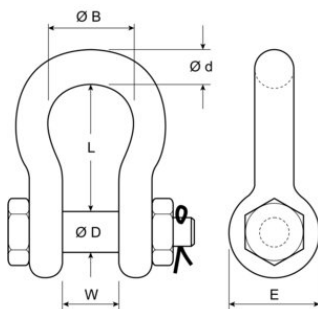
Finish: Hot dip Galvanised with blue painted pins

Safety factor: 6:1

Grade: 6

Bow Shackle with Safety Pin

Blueprint



Technical data

Part Code	WLL ton	d mm	D mm	W mm	L mm	B mm	E mm	Weight (kg)
420100101150	1	10	11	17	37	26	25	0.17
420100151150	1.5	11	13	18	43	29	27	0.24
420100201150	2	13	16	21	48	33	33	0.36
420100331150	3.25	16	19	27	61	43	40	0.69
420100481150	4.75	19	22	32	72	51	48	1.12
420100651150	6.5	22	25	37	84	58	54	1.7
420100851150	8.5	25	29	43	95	68	60	2.5
420100951150	9.5	29	32	46	108	74	67	3.45
420101201150	12	32	35	52	119	83	76	4.9
420101351150	13.5	35	38	57	133	92	84	6.4
420101701150	17	38	41	60	146	98	92	8.4
420102501150	25	44	51	73	178	127	110	14
420103501150	35	51	57	83	197	146	127	20
420105501150	55	65	69	104	263	-	-	39
420108501150	85	75	83	125	325	-	-	63