

Wireless Loadshackle

Product information



Wireless loadshackle with low headroom and a load-centering bobbin.

Battery type/life: Loadcell 4 x AA Alkaline/Load cell 1200 hours continuous.

Accuracy: $\pm 1\%$ of applied load.

Frequency: 2.4 GHz.

System range: 700 m.

Data rate: 3 updates per second.

Protection: IP67.

[... Read more](#)

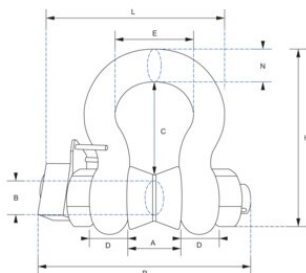
Temperature range: -10°C up to $+50^{\circ}\text{C}$.

Note: Safety factor when used with a load bobbin.

Safety factor: 5:1

Wireless Loadshackle

Blueprint



Technical data

Part Code	Code	WLL ton	Resolution kg	Amm mm	ØB mm	Cmm mm	Dmm mm	Emm mm	Hmm mm	Lmm mm	Nmm mm	Pmm mm	Weight (kg)
423500330160	WLS3,25T	3.25	5	26.9	19.1	56.9	16	42.9	106	127.1	17.5	143	2.8
423500650160	WLS6,5T	6.5	5	36.6	25.4	79.7	22.4	58	148	156.5	24.6	173	3.2
423501200160	WLS12T	12	10	51.5	35.1	113	31.8	82.5	210	196	35.1	218	8
423502500160	WLS25T	25	20	73	51	170	44.5	127	313	281	57	293	18
423505500160	WLS55T	55	50	82.5	57	189.5	51	164	348	306	61	317	25
423508500160	WLS85T	85	50	105	70	253	66.5	184	453	368	79	394	85
423512000160	WLS120T	120	100	127	82.5	319.5	76	200	546	408	92	441	125
423520000160	WLS200T	200	200	180	125	483	120	290	810	580	120	565	260
423530000160	WLS300T	300	500	205	150	576	130	305	950	615	130	615	405
423540000160	WLS400T	400	500	230	175	650	165	325	1,100	705	165	711	662